

# SCHEDULE "C"

LOT# 10

Page \_\_\_\_ of \_\_\_\_



**THE VIRGINIA**  
2559/2591 SQ. FT.

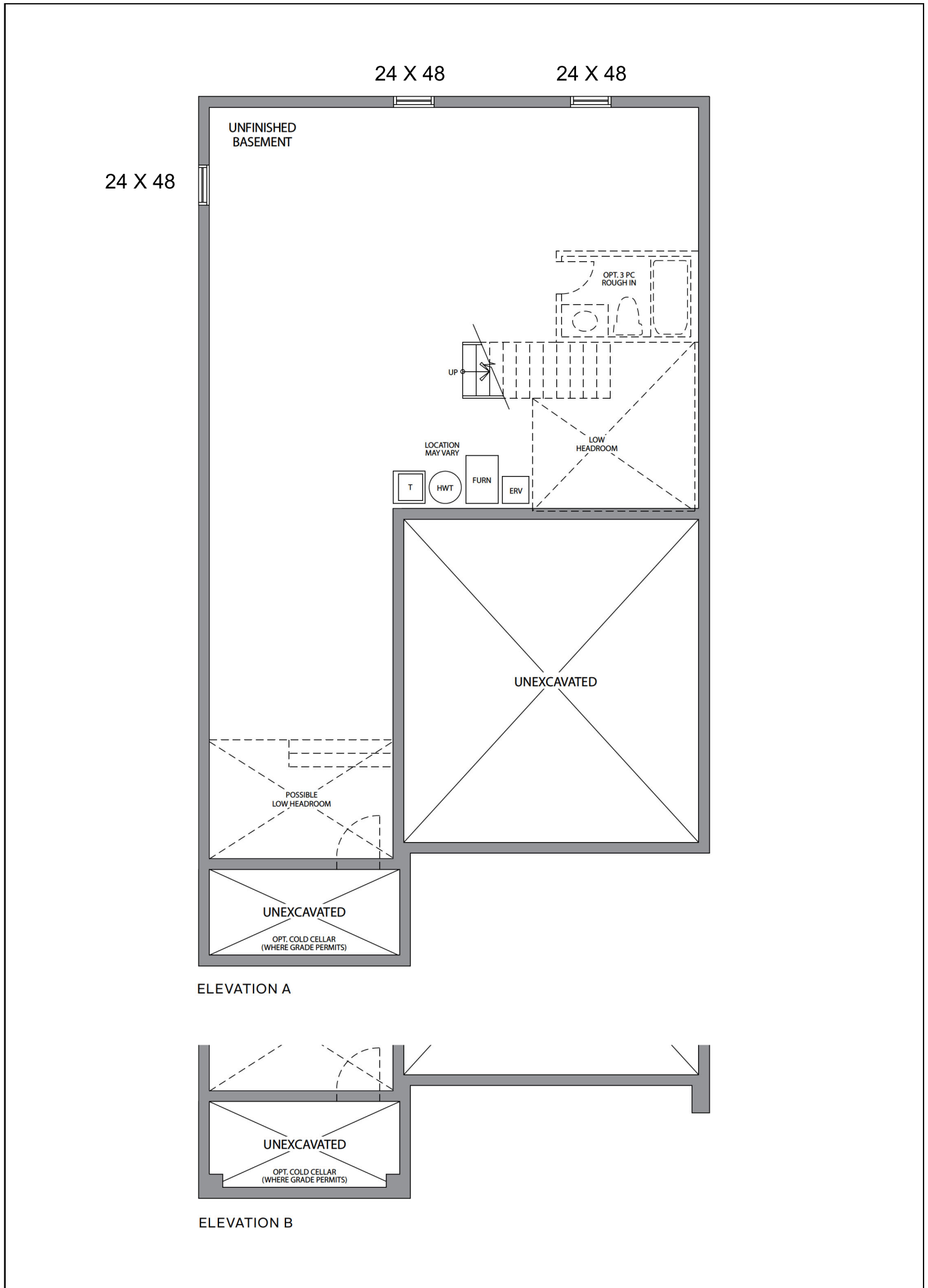
**Elev A**

All illustrations including landscape fixtures, ornaments, gates, fences, piers, furniture, walkways, driveways and the like, and any vegetation except for grass are artist's concept and are not included in the purchase price. All dimensions are approximate. Dotted lines shown on basement floor plans are suggested future layout and only and are not walls. Items marked "optional" are at an additional cost. E&OE.

# SCHEDULE "C"

LOT# 10

Page \_\_\_\_ of \_\_\_\_



## THE VIRGINIA Basement

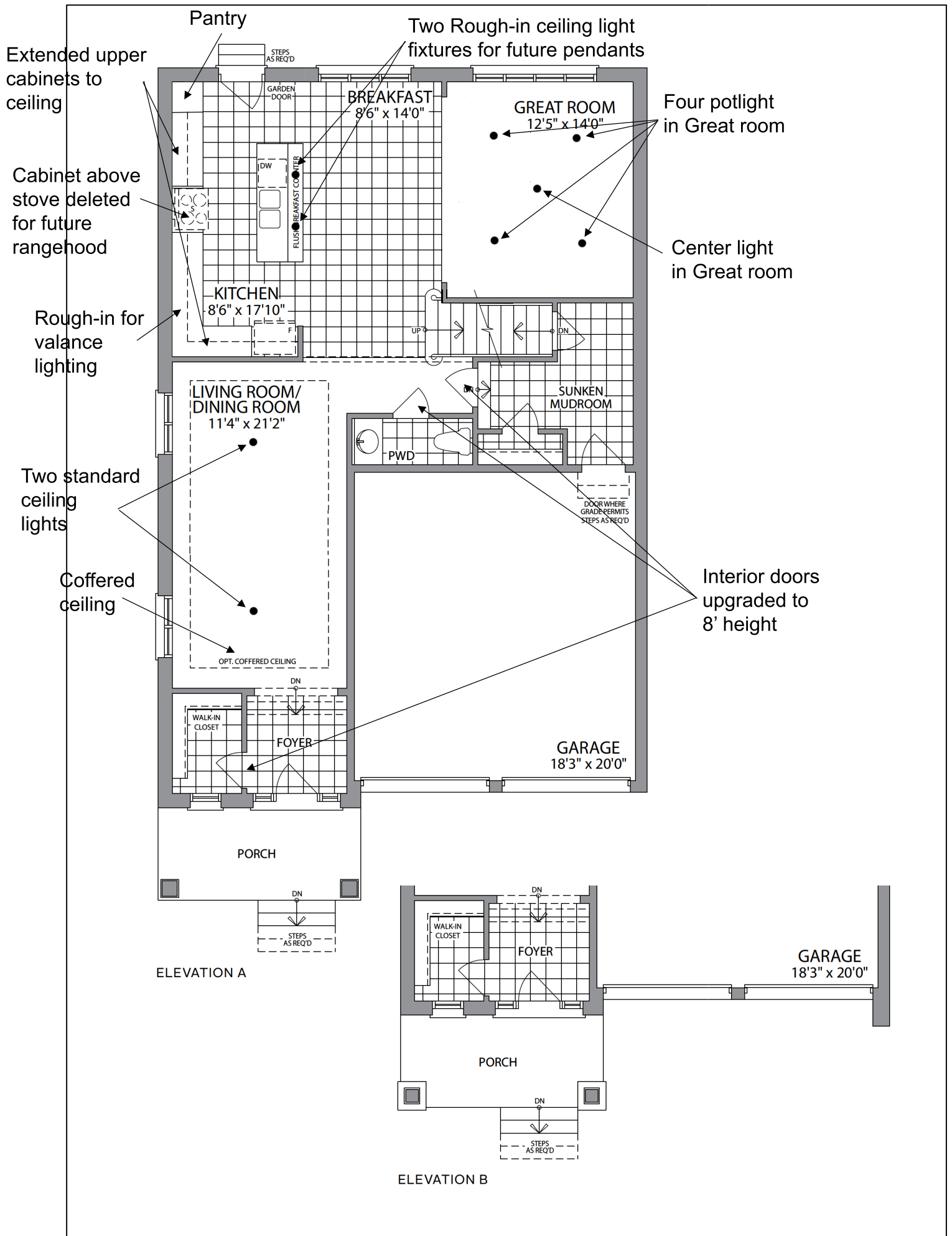
## Elev A

All illustrations including landscape fixtures, ornaments, gates, fences, piers, furniture, walkways, driveways and the like, and any vegetation except for grass are artist's concept and are not included in the purchase price. All dimensions are approximate. Dotted lines shown on basement floor plans are suggested future layout and only and are not walls. Items marked "optional" are at an additional cost. E&OE.

# SCHEDULE "C"

LOT# 10

Page \_\_\_\_ of \_\_\_\_



## THE VIRGINIA Ground Floor

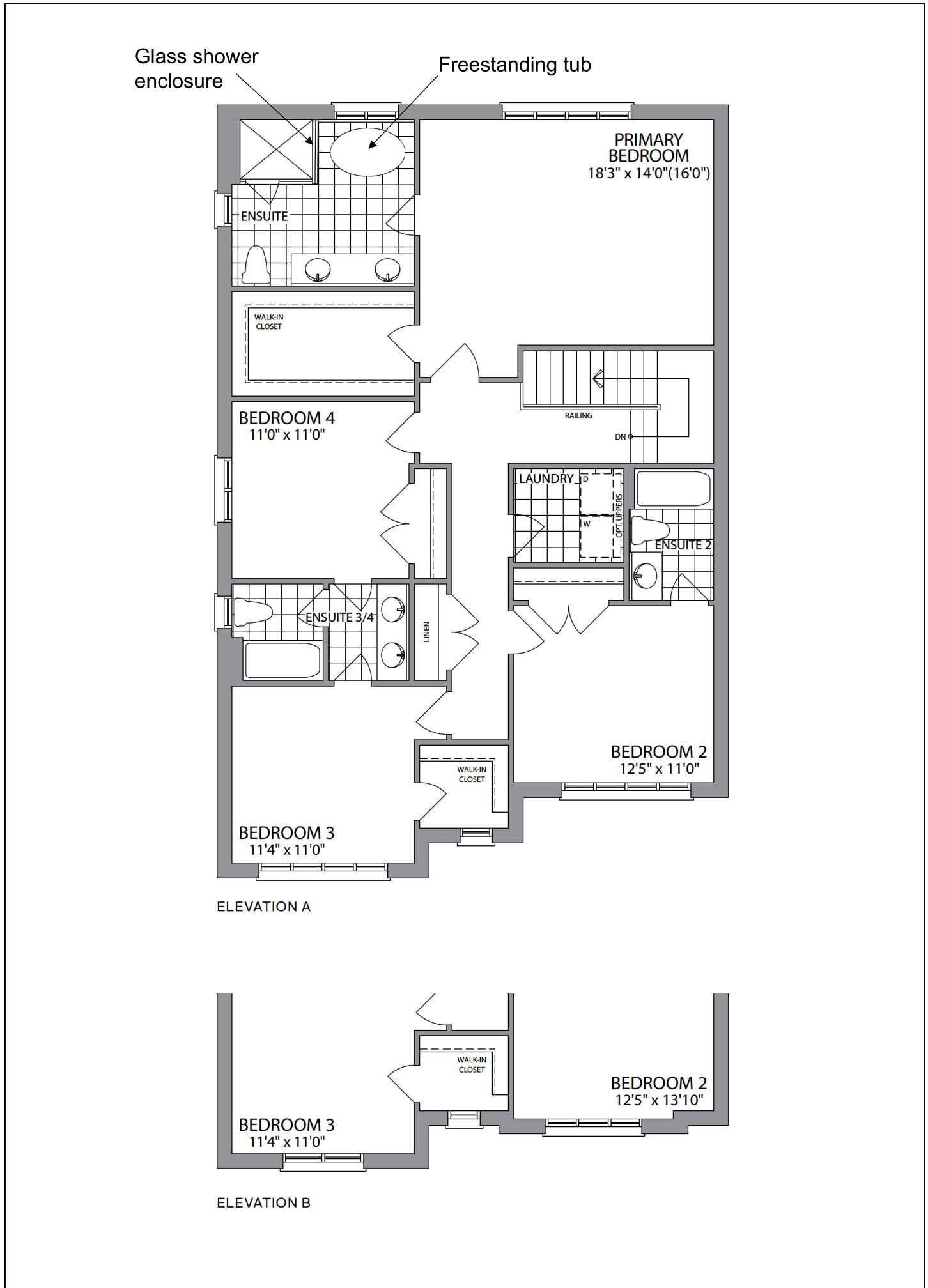
## Elev A

All illustrations including landscape fixtures, ornaments, gates, fences, piers, furniture, walkways, driveways and the like, and any vegetation except for grass are artist's concept and are not included in the purchase price. All dimensions are approximate. Dotted lines shown on basement floor plans are suggested future layout and only and are not walls. Items marked "optional" are at an additional cost. E&OE.

# SCHEDULE "C"

LOT# 10

Page \_\_\_\_ of \_\_\_\_



## THE VIRGINIA Second Floor

## Elev A

All illustrations including landscape fixtures, ornaments, gates, fences, piers, furniture, walkways, driveways and the like, and any vegetation except for grass are artist's concept and are not included in the purchase price. All dimensions are approximate. Dotted lines shown on basement floor plans are suggested future layout and only and are not walls. Items marked "optional" are at an additional cost. E&OE.